

ECU Studio

MV Agusta



Welcome to ECU Studio, the home of ECU flashing for your motorcycle. ECU Studio is software that through the appropriate interface, enables reprogramming of your motorcycles Electronic Control Unit (ECU) and is available for a wide range of latest generation makes and models.

INTRODUCTION

ECU Studio enables you to tune out the compromises that occur in mass production and optimise your fuelling, by allowing you to access and modify the various tables and parameters within the ECU, allowing you to access the full potential of the engine. In addition to the control of ignition, fuelling etc, ECU Studio also allows the enabling of new features such as Auto-Blipper, pit lane limiter etc.

ECU Studio is a professional product that is comparable to all class leading ECU configuration and programming software and should not be confused with simpler software such as that supplied with piggyback style systems.

ECU Studio enables professional ECU management and it enables the reconfiguration of the various maps at will with precision and total accuracy.

Key Features (model dependant):

- No hardware changes to the ECU required
- It is possible to reverse all changes made to the ECU and revert to factory configuration
- Enable additional features
- Access all standard and some additional maps
- Ease of use through an intuitive graphical interface
- Data logging via PC
- Live Data displayed on maps
- Diagnosis, service functions and Fault Reset

MV Specific Features

Features

- o ECU Reflash
- o ECU error codes clearing
- o Realtime log
- o Live data displayed on maps

Race features

- o Fast map switch
- o Enable quickshifter and auto blipper
- o Engine braking
- o Traction control

Tuneable maps

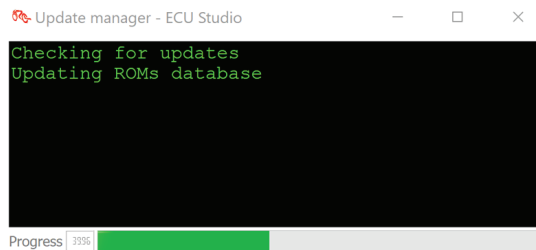
- o Ignition
 - Base and advanced timing
 - Temperature compensation
 - Idle ignition timing
- o Engine Load Tuning
 - Engine Load to throttle opening
 - Intake Air Pressure to engine load
 - Accelerator position to engine load
- o Fueling
 - Base fuel map
 - Fuel Trim
 - Compensation maps
 - Fuel Cut off
- o Engine braking
- o Traction control
- o Settings
 - O2 sensor on/off
 - Exhaust valve on/off
 - Road or race gear shift
 - RPM Limiter

SOFTWARE INSTALLATION

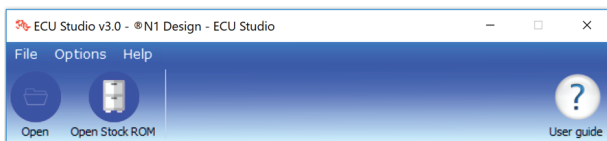
Installation

The installation procedure is straight forward, the PC or laptop user account should have administrator rights enabled.

- Insert the dongle into the PC / Laptop's USB port (this contains your licence)
- Download the executable (.exe) file using the link provided by email
- Double click on the downloaded file to install the software
- Once complete ECU Studio will be added to the Start Menu and if enabled the recently added list of applications.
- Insert the ECS-01 Interface into the PC / Laptop's USB port
- From the Start Menu, click on ECU Studio to start the software
- ECU Studio will automatically perform a check for the latest version of software and Map database. The first use of the software will require a longer download for the whole of the database. ROM update screen, will be displayed showing the progress of the download



- Once the download is complete ECU Studio will automatically open, the following screen will be displayed



- Your installation is complete


STEP BY STEP FIRST FLASH

The first flash can seem daunting to the uninitiated, to help with this the following is a step by step procedure to your first flash.

PLEASE READ THE USER MANUAL FOR ADVISORY INFORMATION. This is available from our website or in the install directory located C:\Users\%username%\AppData\Roaming\ECU Studio\Support

There are also webcasts available on our website

Flashing Procedure

- Connect the ECU Interface and Dongle to the PC and open ECU Studio
- Click on the Database icon () to open a stock ROM
- The ROM window will now be displayed
- Check the settings within the ROM for any features such as Quick Shifter etc that you may wish to change.
Note: Our advice is to leave the settings as stock for the first flash.
- Connect the ECU Interface (to the bike & turn the ignition on.
- In the ROM window menu, select **Program, Flash** this will open the flashing window to interact with the ECU
- Press **Serial Number**
The correct reading of the Serial Number will confirm correct operation of the communications link.
- Press the **Write** button
ECU Studio will flash (write) the whole ROM file (including any changes made since opening the ROM file) to the ECU. Follow the on-screen prompts to turn the ignition off and on.

Flashing the whole ROM can take several minutes to complete. The Flashing Window will indicate the progress on the bar in the lower left-hand corner of the screen
- The flashing will stop, and a warning will be displayed saying
"No licence is present in the ECU. Do you want to use one?"

Do not worry this is normal for the first flash on all ECU's as there is no licence associated with this ECU yet.
Click on Yes to proceed
- Follow the screen prompts when the flashing is complete.
- ECU Studio can now be closed
- Remove the ECU Interface and Dongle from the PC and store safely.

That's it, you have completed your first ECU Flash using ECU Studio.